



## BAM25-200-D-B-780

The a|BeamExpander is a monolithic laser accessory with just one aspheric lens for the highest level of precision. Experience nearly endless possibilities with up to 32× beam magnification and optimized performance for different design wavelengths [355 nm / 532 nm / 632 nm / 780 nm / 1064 nm].

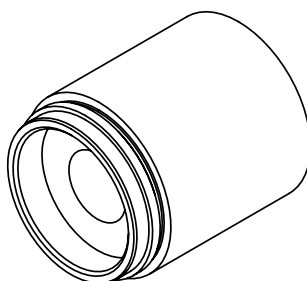
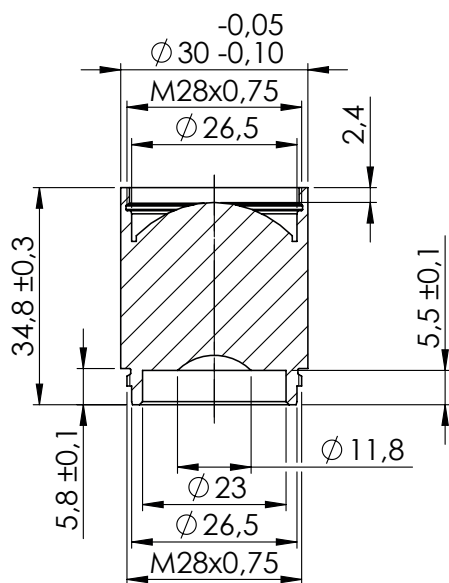
### Key Benefits:

- = Design wavelength: 780 nm, magnification: 2.0
- = Possibility of combining up to five expander for up to 32 times beam expansion and over 230 intermediate stages
- = Completely diffraction-limited – individually measured and guaranteed by an original asphericon certificate
- = Laser induced damage threshold (Coating): 12 J/cm<sup>2</sup>, 100 Hz, 6 ns, 532 nm

*Like all BeamTuning elements all a|BeamExpander come with a broadband coating. For higher laser power applications please request a V-Coating. Contact us for an individual offer. Please note the material damage threshold of your set-up!*



### Technical Dimensions:



asphericon GmbH  
Stockholmer Str. 9 | 07747 Jena  
Germany



+49 (0) 3641 - 3100 560



+49 (0) 3641 - 3100 561

asphericon s.r.o.  
Miliřská 449 | Jeřmanice 463 12  
Czech Republic



+420 488 100 300

asphericon, Inc.  
8586 Potter Park Drive  
Sarasota, FL 34238 | USA



+1 - 941 - 564 0890



[sales@asphericon.com](mailto:sales@asphericon.com)



[www.asphericon.com](http://www.asphericon.com)