

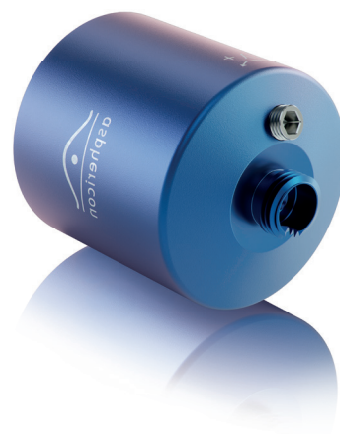
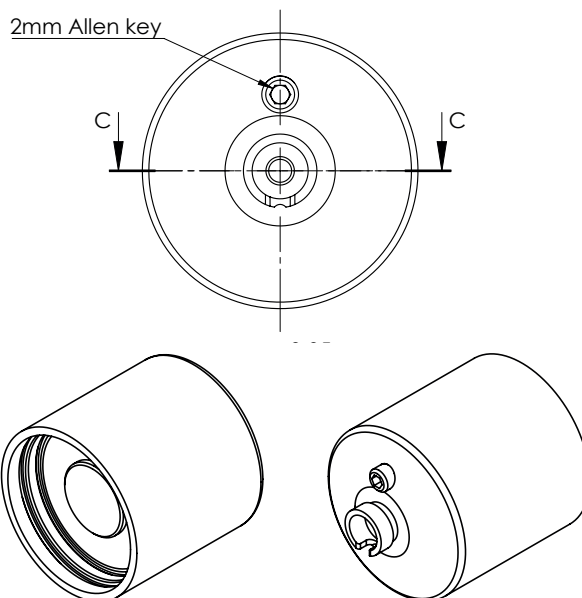
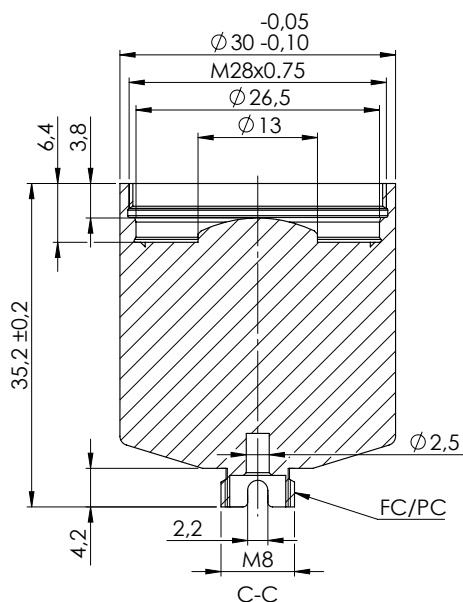
**ACM25-20-L-B-632**

The a|AspheriColl is an adjustable fiber collimation device, which enables the perfect connection of FC/PC patch fibers to your set-up. Combine the world's smartest off-the-shelf fiber collimator for NA's up to 0.275 with BeamTuning or other beam shaping elements to obtain any desired output beam while maintaining a diffraction-limited wavefront.

The a|AspheriColl is also available for the UV range. With the design wavelength of 355 nm, it is now also possible to collimate output beams in the wavelength range 350 - 405 nm.

**Key Benefits:**

- = Design wavelength: 632 nm, usable wavelength range: 600 – 760 nm
- = Focal length:  $f = 20$  mm, with  $\varnothing_e = 11.5$  mm
- = Simplified wavelength adaption by setting adjustment unit with SW2 allen key
- = Completely diffraction-limited performance ( $\text{Strehl} > 0.95$ ) when used with FC/PC patch fibers
- = Thanks to matching adapters also usable for APC fibers
- = No truncation effects compared to other available fiber couplers
- = Thanks to bigger output beam diameters, no additional expansion might be needed (shorter system length)
- = Laser induced damage threshold:  $12\text{ J/cm}^2$ , 100Hz, 6ns, 532nm  
*For higher laser power applications please request a V-Coating.  
Contact us for an individual offer.*

**Technical Dimensions:**

asphericon GmbH  
Stockholmer Str. 9 | 07747 Jena  
Germany

+49 (0) 3641 - 3100 560  
+49 (0) 3641 - 3100 561

asphericon s.r.o.  
Miliřská 449 | Jeřmanice 463 12  
Czech Republic

+420 488 100 300

asphericon, Inc.  
8586 Potter Park Drive  
Sarasota, FL 34238 | USA

sales@asphericon.com

+1 - 941 - 564 0890

www.asphericon.com